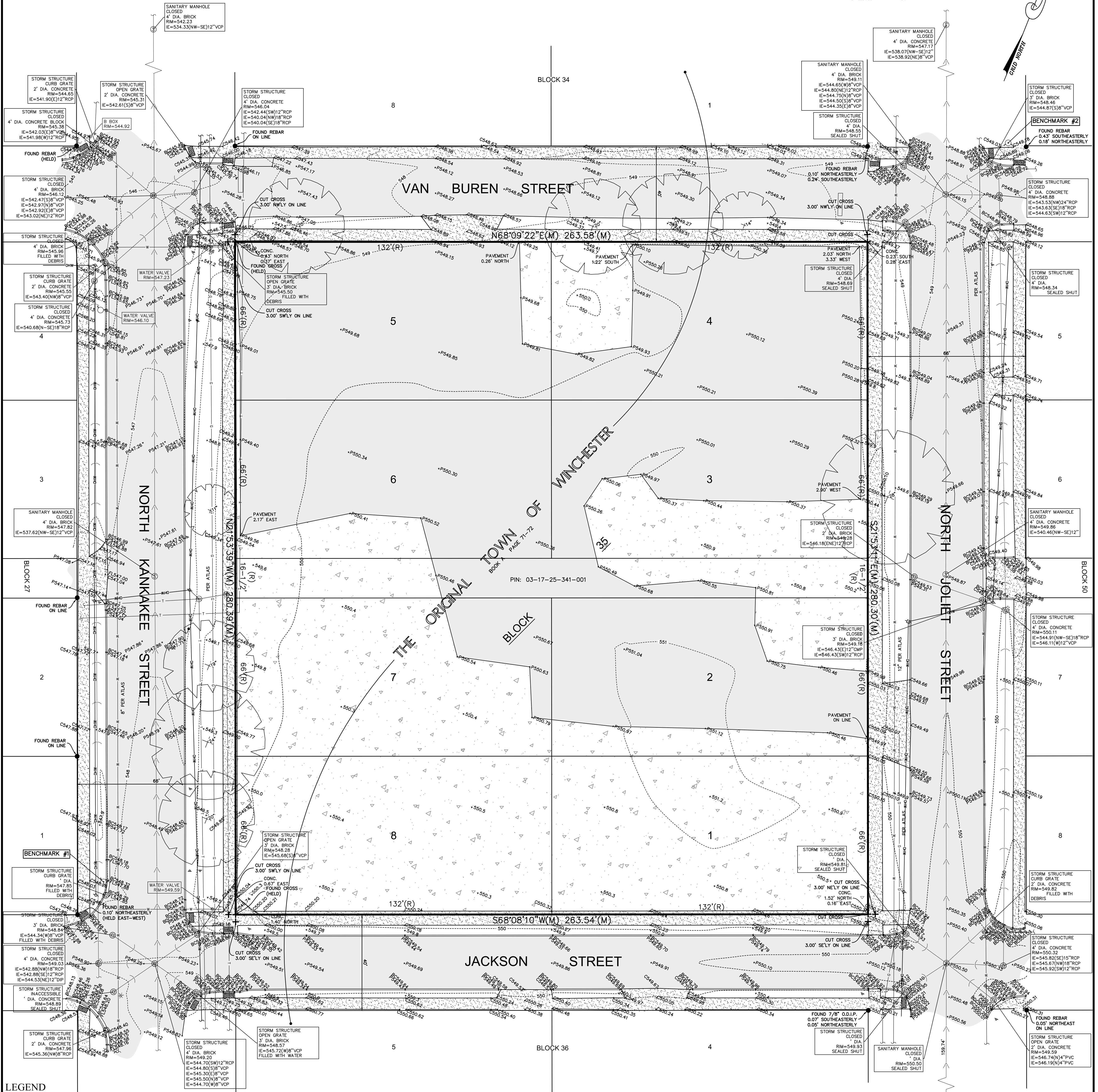
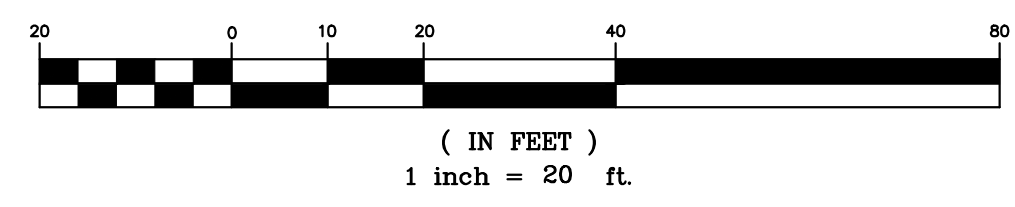


# BOUNDARY AND TOPOGRAPHIC SURVEY

## LEGAL DESCRIPTION

BLOCK 35 IN THE ORIGINAL TOWN OF WINCHESTER (NOW WILMINGTON) OF THE SOUTHWEST QUARTER OF SECTION 25, TOWNSHIP 33 NORTH, RANGE 9 EAST OF THE THIRD PRINCIPAL MERIDIAN, ACCORDING TO THE PLAT THEREOF RECORDED MAY 16, 1836 IN BOOK A, PAGES 71 AND 72, IN WILL COUNTY, ILLINOIS.

## GRAPHIC SCALE



- ### LEGEND
- FOUND 7/8" O.D.I.P. UNLESS OTHERWISE NOTED (HELD LOCATION)
  - CONCRETE MONUMENT
  - ⊕ CROSS IN CONCRETE
  - MANHOLE
  - ⊙ STORM STRUCTURE
  - ⊙ SANITARY MANHOLE
  - ⊙ CLEANOUT
  - ⊙ FLARED END SECTION
  - ⊙ TRANSFORMER PAD
  - ⊙ ELECTRIC MANHOLE
  - ⊙ ELECTRIC BOX
  - ⊙ ELECTRIC PEDESTAL
  - ⊙ ELECTRIC MARKER
  - ⊙ ELECTRIC METER
  - ⊙ UTILITY POLE
  - ⊙ UTILITY POLE W/LIGHT
  - ⊙ UTILITY POLE W/TSF
  - ⊙ GUY POLE
  - ⊙ OVERHEAD TRAFFIC SIGNAL
  - ⊙ TRAFFIC SIGNAL MANHOLE
  - ⊙ LIGHT
  - ⊙ LIGHT POLE
  - ⊙ HAND HOLE
  - ⊙ VALVE VAULT
  - ⊙ FIRE HYDRANT
  - ⊙ IRRIGATION CONTROL VALVE
  - ⊙ POST INDICATOR VALVE
  - ⊙ SIAMSE WATER CONNECTION
  - ⊙ WATER MARKER
  - ⊙ WATER METER
  - ⊙ VALVE BOX
  - ⊙ B/BOX
  - ⊙ SPRINKLER CONTROL VALVE
  - ⊙ TELEPHONE MANHOLE
  - ⊙ TELEPHONE NETWORK INTERFACE
  - ⊙ TELEPHONE MARKER
  - ⊙ TELEPHONE PEDESTAL
  - ⊙ CABLE TELEVISION PEDESTAL
  - ⊙ CONTROL BOX
  - ⊙ WETLAND FLAG
- ### LINE LEGEND
- LIMITS OF LAND PER LEGAL DESCRIPTION
  - ADJACENT LAND
  - PARCEL LINE
  - EASEMENT LINE
  - CENTERLINE
  - BUILDING SETBACK LINE
  - SECTION LINE
  - EXISTING CONTOUR
- ### ABBREVIATIONS
- O.D.I.P. = OUTSIDE DIAMETER IRON PIPE
  - TF = TOP OF FOUNDATION
  - FF = FINISHED FLOOR
  - FES = FLARED END SECTION
  - VCP = VITRIFIED CLAY PIPE
  - DIP = DUCTILE IRON PIPE
  - P.V.C. = POLYVINYL CHLORIDE
  - RCP = REINFORCED CONCRETE PIPE
  - CMP = CORRUGATED METAL PIPE
  - E = ELECTRIC LINE
  - OW = OVERHEAD WIRES
  - TEL = TELEPHONE LINE
  - CONF = CONFEROUS TREE
  - W/APPROX. DIAMETER
  - DECIDUOUS TREE
  - W/APPROX. DIAMETER
  - MS-MULTI-STEM (DRIP LINE SHOWN IS APPROXIMATE)
  - MAILBOX
  - SANITARY SEWER
  - STORM SEWER
  - WATER MAIN
  - GAS MAIN
  - ELECTRIC LINE
  - OVERHEAD WIRE
  - TELEPHONE LINE
  - CONFEROUS TREE
  - W/APPROX. DIAMETER
  - DECIDUOUS TREE
  - W/APPROX. DIAMETER
  - MS-MULTI-STEM (DRIP LINE SHOWN IS APPROXIMATE)
  - MAILBOX
  - SANITARY SEWER
  - STORM SEWER
  - WATER MAIN
  - GAS MAIN
  - ELECTRIC LINE
  - OVERHEAD WIRE
  - TELEPHONE LINE
  - CONFEROUS TREE
  - W/APPROX. DIAMETER
  - DECIDUOUS TREE
  - W/APPROX. DIAMETER
  - MS-MULTI-STEM (DRIP LINE SHOWN IS APPROXIMATE)

- ### BENCHMARKS
- REFERENCE BENCHMARK:**  
NOS MONUMENT  
DESIGNATION: N 247  
P.O.B. = POINT OF BEGINNING  
P.U. & D.E. = PUBLIC UTILITY AND DRAINAGE EASEMENT
- BENCHMARK DISK SET IN TOP OF CONCRETE MONUMENT
- DATUM: NAVD83  
ELEVATION = 558.11
- SITE BENCHMARKS:**
- SITE BENCHMARK #1:**  
NUMBER BOLT ON FIRE HYDRANT AT THE NORTHWEST CORNER OF THE INTERSECTION OF VAN BUREN STREET AND JOLIET STREET, SOUTHWEST OF SITE.  
ELEVATION = 550.38
- SITE BENCHMARK #2:**  
NUMBER BOLT ON FIRE HYDRANT AT THE NORTHEAST CORNER OF THE INTERSECTION OF VAN BUREN STREET AND JOLIET STREET, NORTHEAST OF SITE.  
ELEVATION = 551.24

- ### UTILITY CONTACTS
- DESIGN DIG #22082225-00X
- CITY OF WILMINGTON  
1165 S. WATER STREET WILMINGTON, IL 60481  
(815) 476-2175
- CABLE  
COMCAST  
MARTHA GERAS  
224-229-5862  
MARTHA\_GERAS@COMCAST.COM
- ELECTRIC  
COMED  
630-576-7094
- GAS  
NICOR GAS  
GASMAPS@NICOR.COM
- COMMUNICATIONS  
AT&T  
61629@ATT.COM
- WATER / SANITARY / STORM  
CITY OF WILMINGTON  
RODNEY TONELLI  
815-744-6600  
RTONELLI@CITYOFWILMINGTON.COM

### AREA SUMMARY

(TO HEAVY LINES)  
73,888 SQUARE FEET  
OR  
1.696 ACRES  
(BASED ON MEASURED VALUES)

### CERTIFICATION

STATE OF ILLINOIS ) SS  
COUNTY OF KANE )

THE ABOVE DESCRIBED PROPERTY WAS SURVEYED UNDER THE DIRECTION OF AN ILLINOIS PROFESSIONAL LAND SURVEYOR ON 04/01/2022. ALL DISTANCES SHOWN ARE IN FEET AND DECIMAL PARTS THEREOF.

THIS PROFESSIONAL SERVICE CONFORMS TO THE CURRENT ILLINOIS MINIMUM STANDARDS FOR A BOUNDARY SURVEY.

THIS PROFESSIONAL SERVICE CONFORMS TO THE CURRENT ILLINOIS MINIMUM STANDARDS FOR TOPOGRAPHIC SURVEYS.

COMPASS SURVEYING LTD  
PROFESSIONAL DESIGN FIRM  
LAND SURVEYOR CORPORATION NO. 184.002778  
LICENSE EXPIRES 4/30/2023

BY: *Daniel W. Walter* DATE: 04/20/2022  
DANIEL W. WALTER  
ILLINOIS PROFESSIONAL LAND SURVEYOR NO. 3585  
LICENSE EXPIRES 11/30/2022